

# North Carolina Drought Management Advisory Council - 4/28/2016

Michael Moneypenny  
Hydrologist  
NWSFO Raleigh, NC

Eric Seymour  
Hydrologist  
NWSFO Wakefield, VA

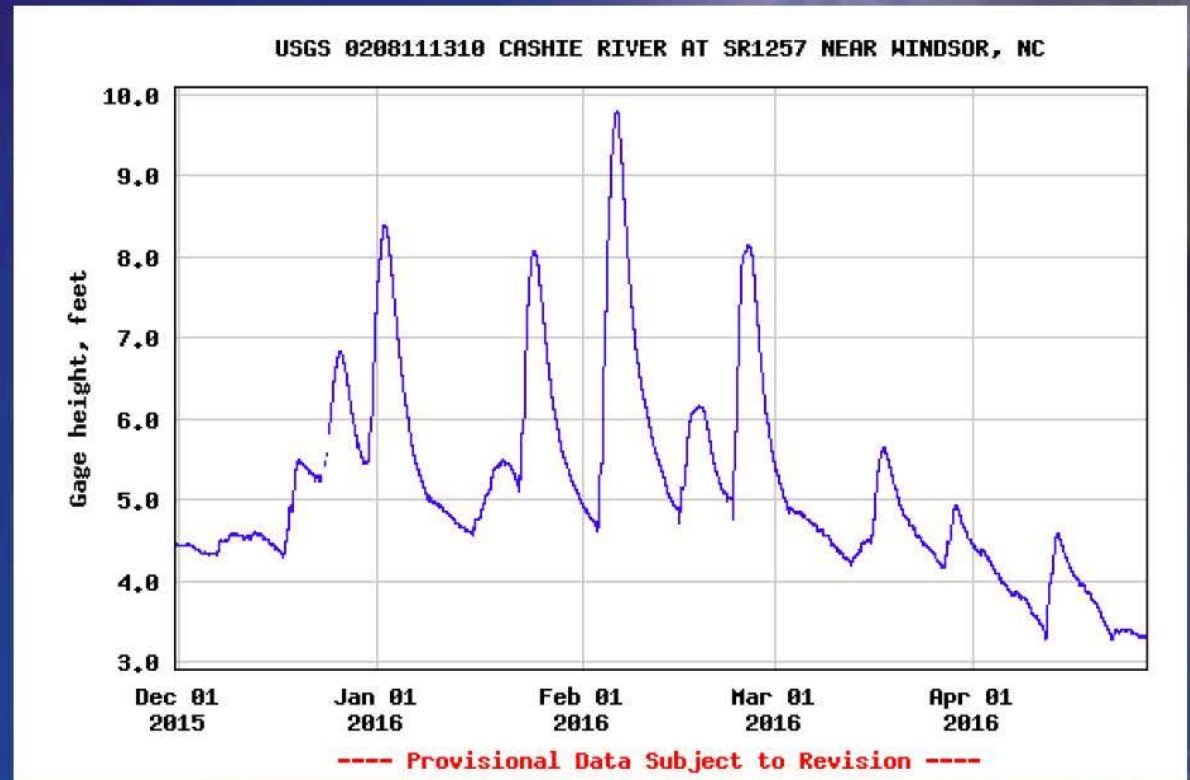
Falls Lake  
Early Summer 2008



# Water Levels at Windsor, NC Winter 2015/2016

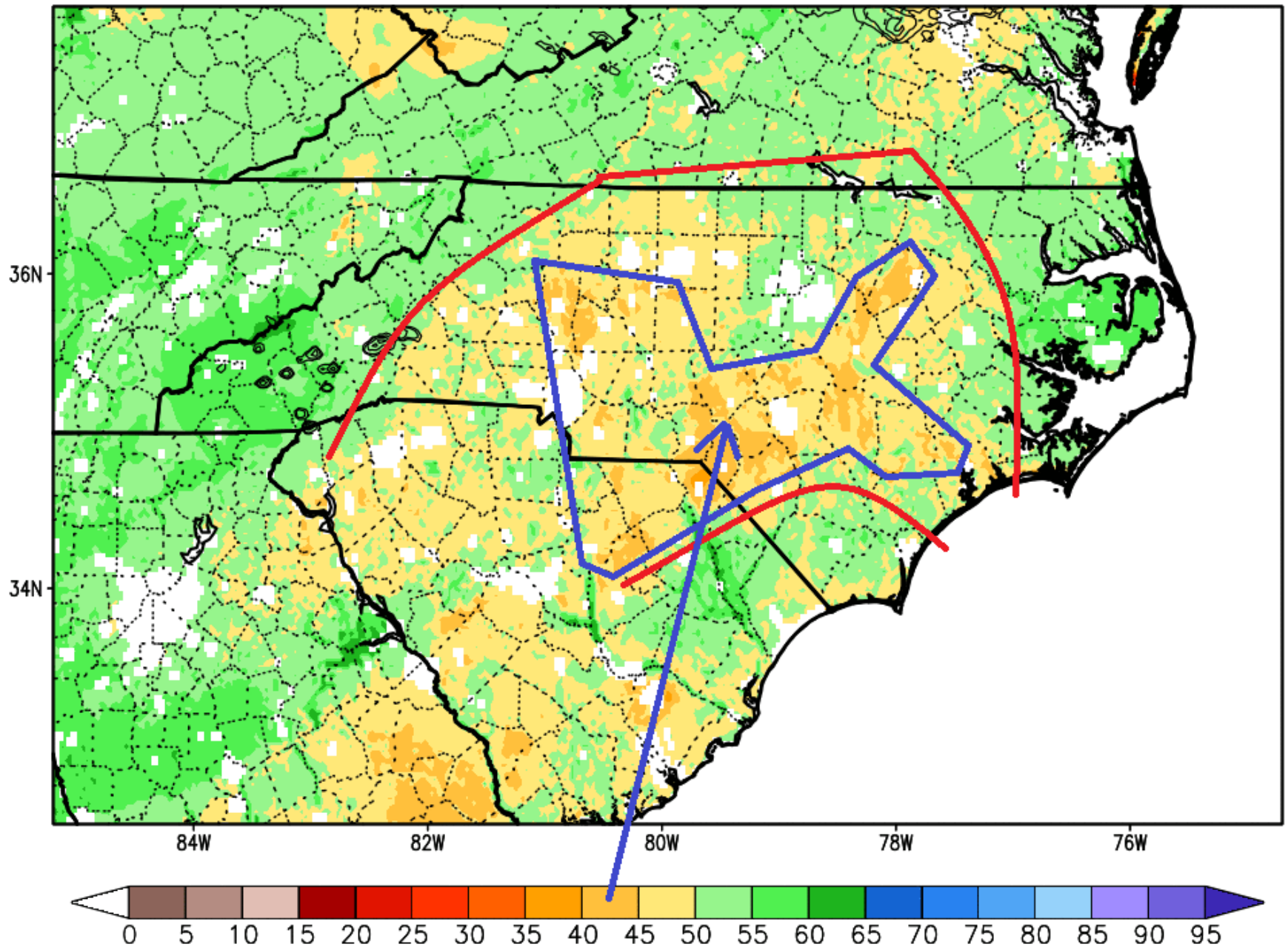
## Flood Stage 8 FT

1. 8.40 FT 1/2/2016
2. 8.07 FT 1/25/2016
3. 9.80 FT 2/6/2016
4. 8.15 FT 2/26/2015

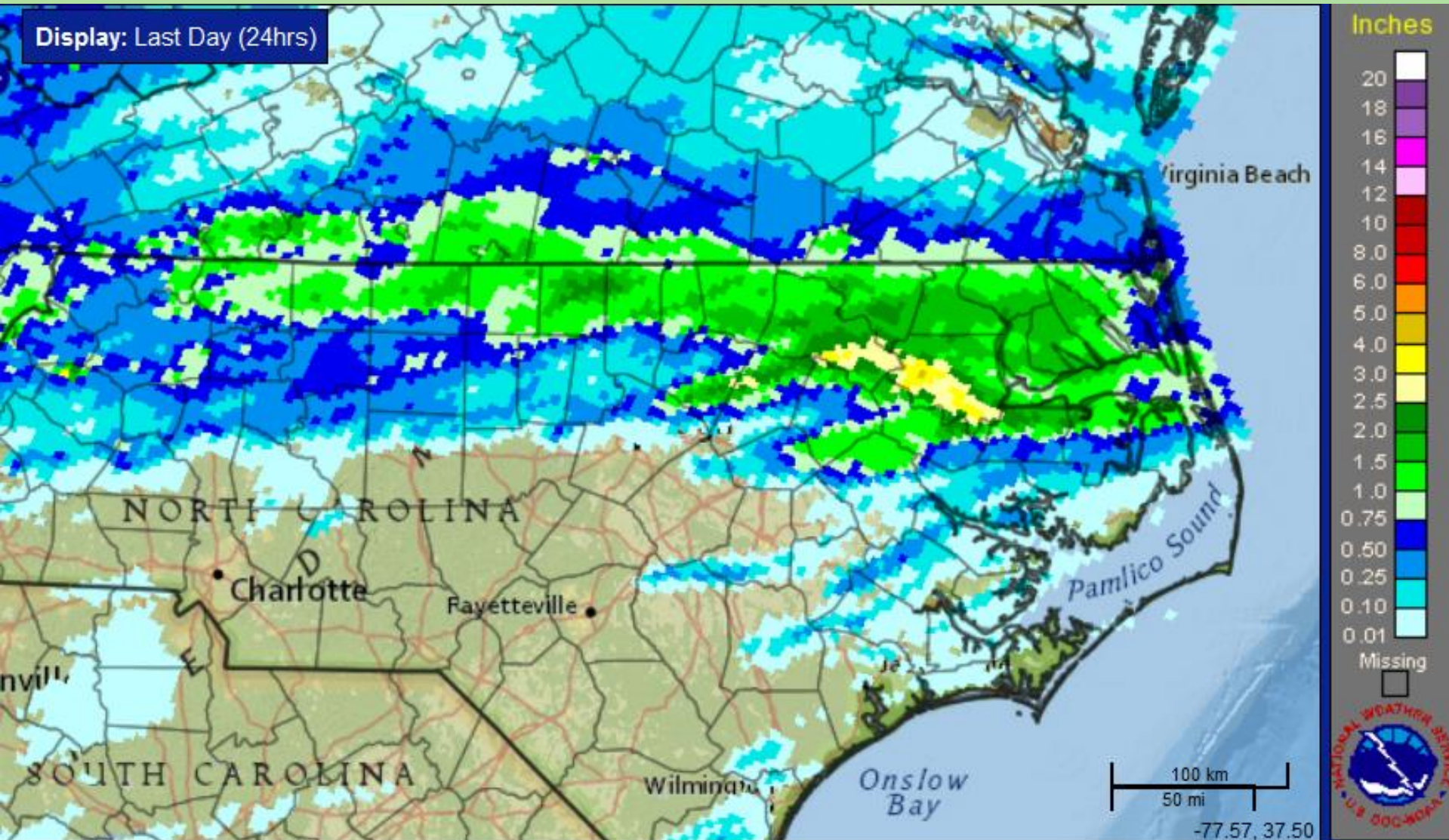


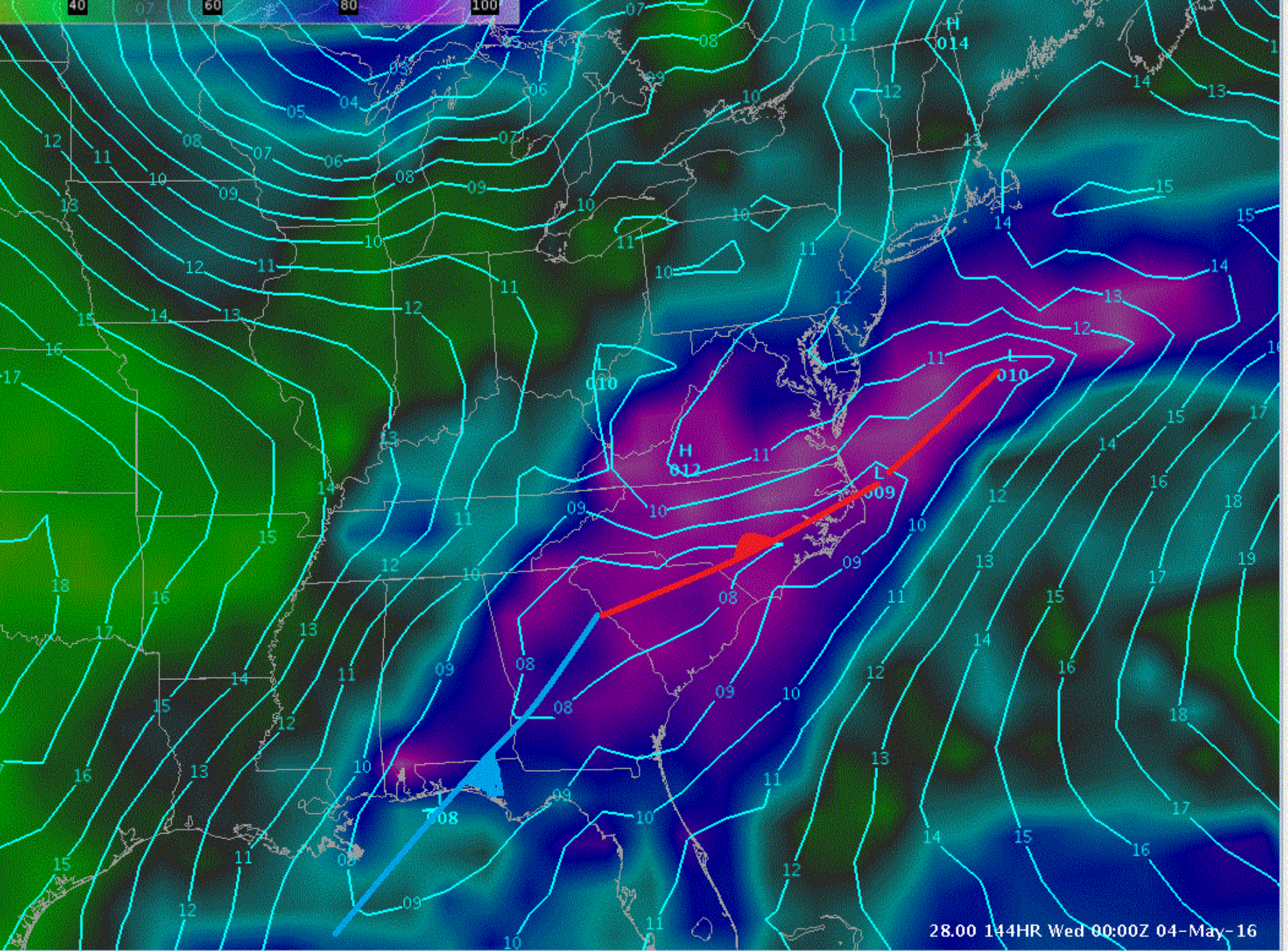
# Column-Integrated Relative Soil Moisture (available water; %) valid 00z 27 Apr 2016

Precipitation in previous hour (1,2,5,10,15,20,25 mm contours)

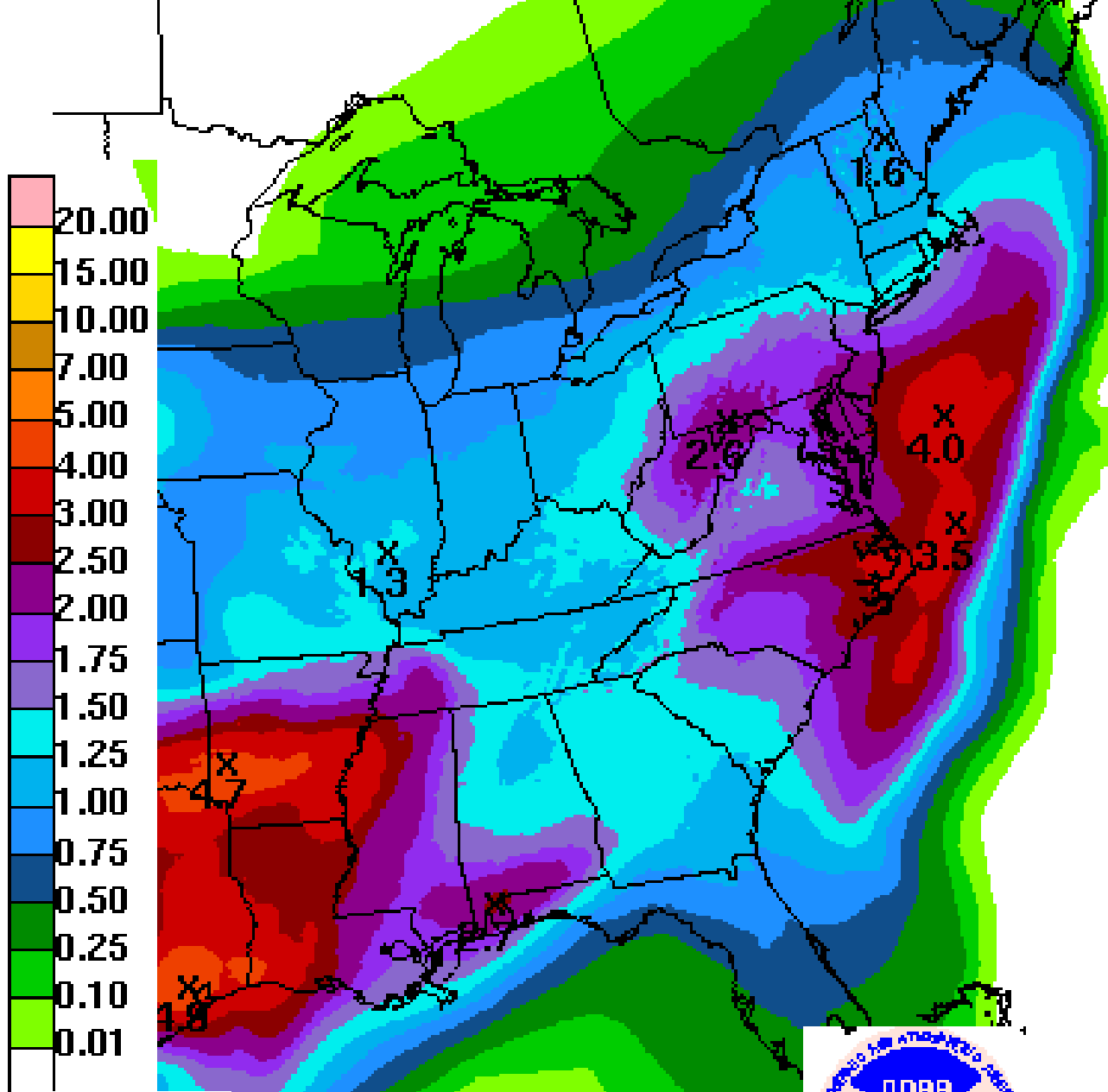


# Last Night's Rainfall



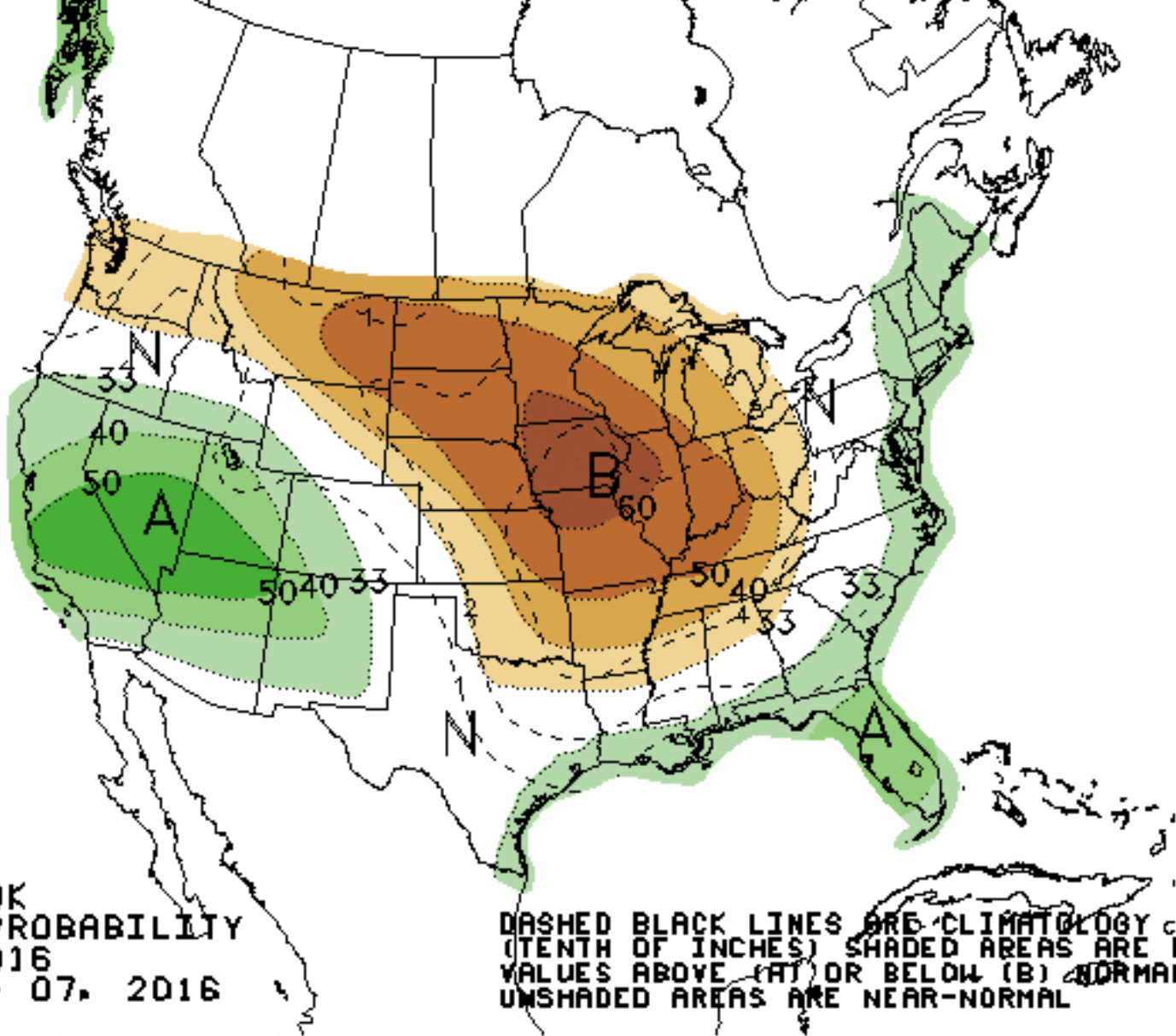


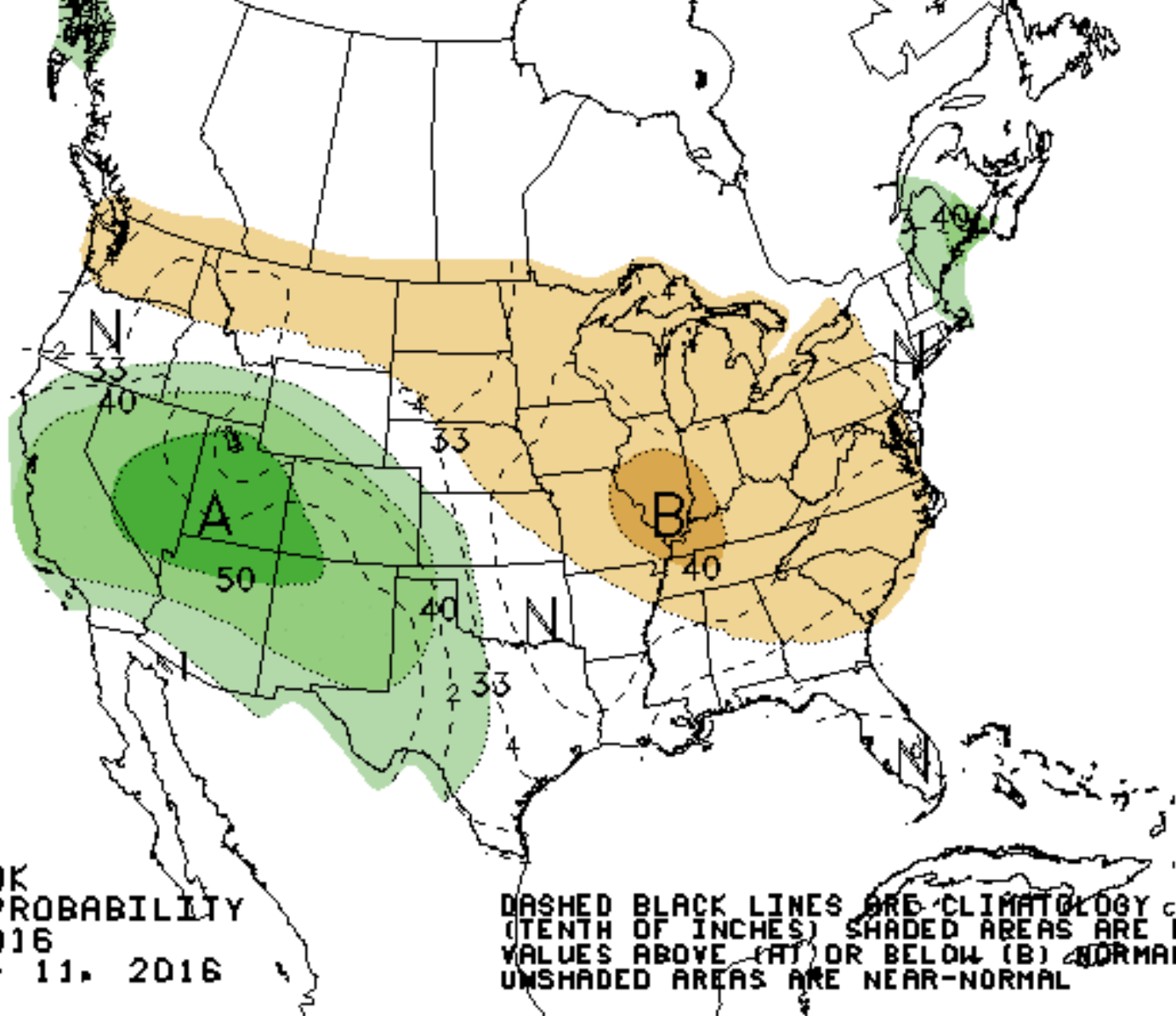
28.00 144HR Wed 00:00Z 04-May-16



**WPC 7-DAY OPF**  
**ISSUED: 0952Z THU APR 28 2016**  
**VALID: 12Z THU APR 28 2016**  
**THRU: 12Z THU MAY 05 2016**







90% 80% 70% 60% 50% 40% 33% 33% 40% 50% 60% 70% 80% 90%

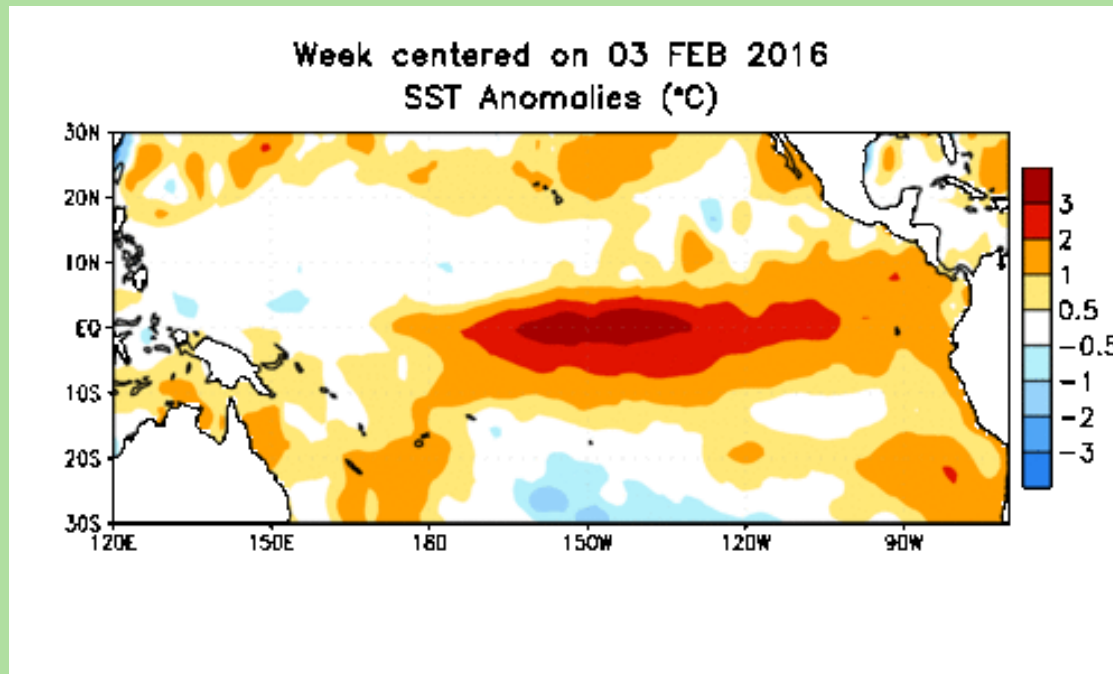
Probability of Below

Normal

Probability of Above



# ENSO Outlook



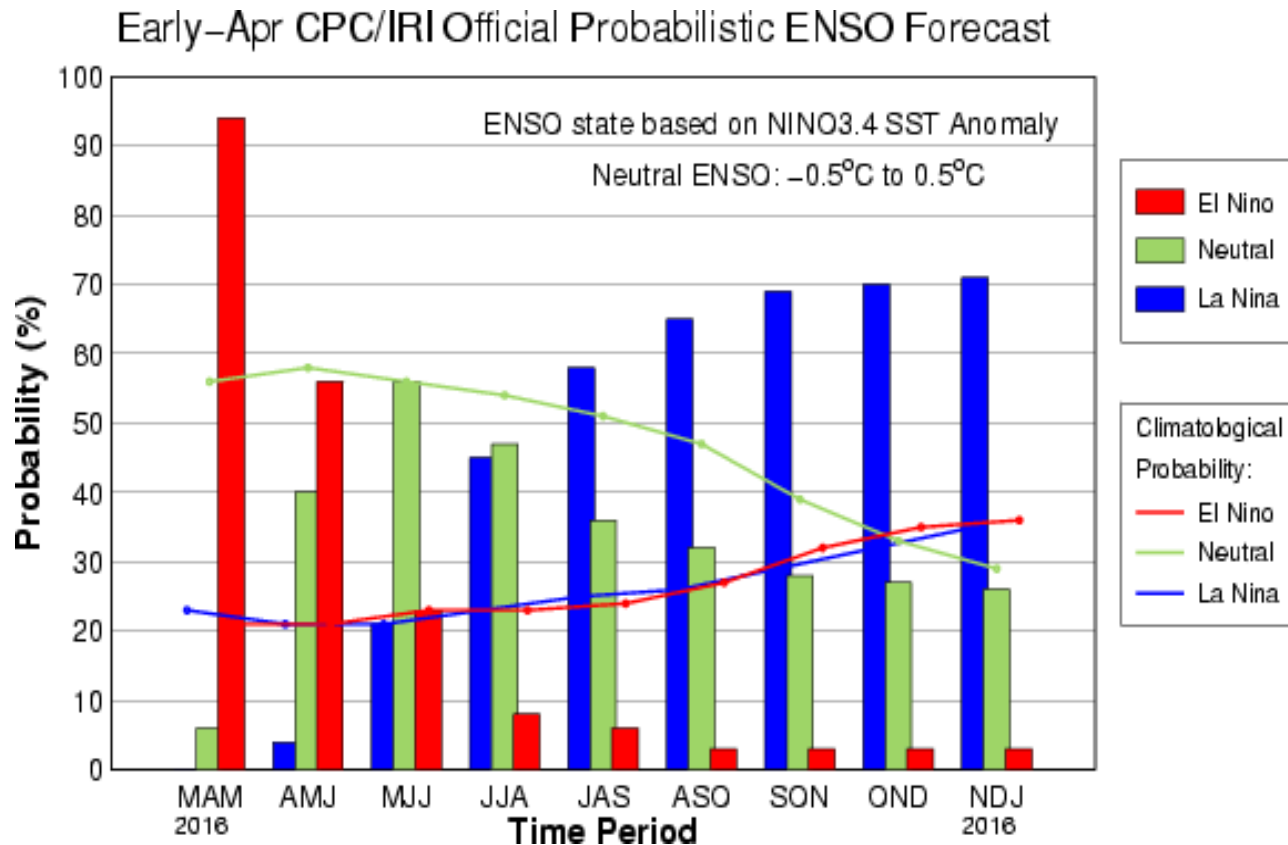
## Summary

El Niño is present and is weakening.

Positive equatorial sea surface temperature (SST) anomalies continue across most of the Pacific Ocean.

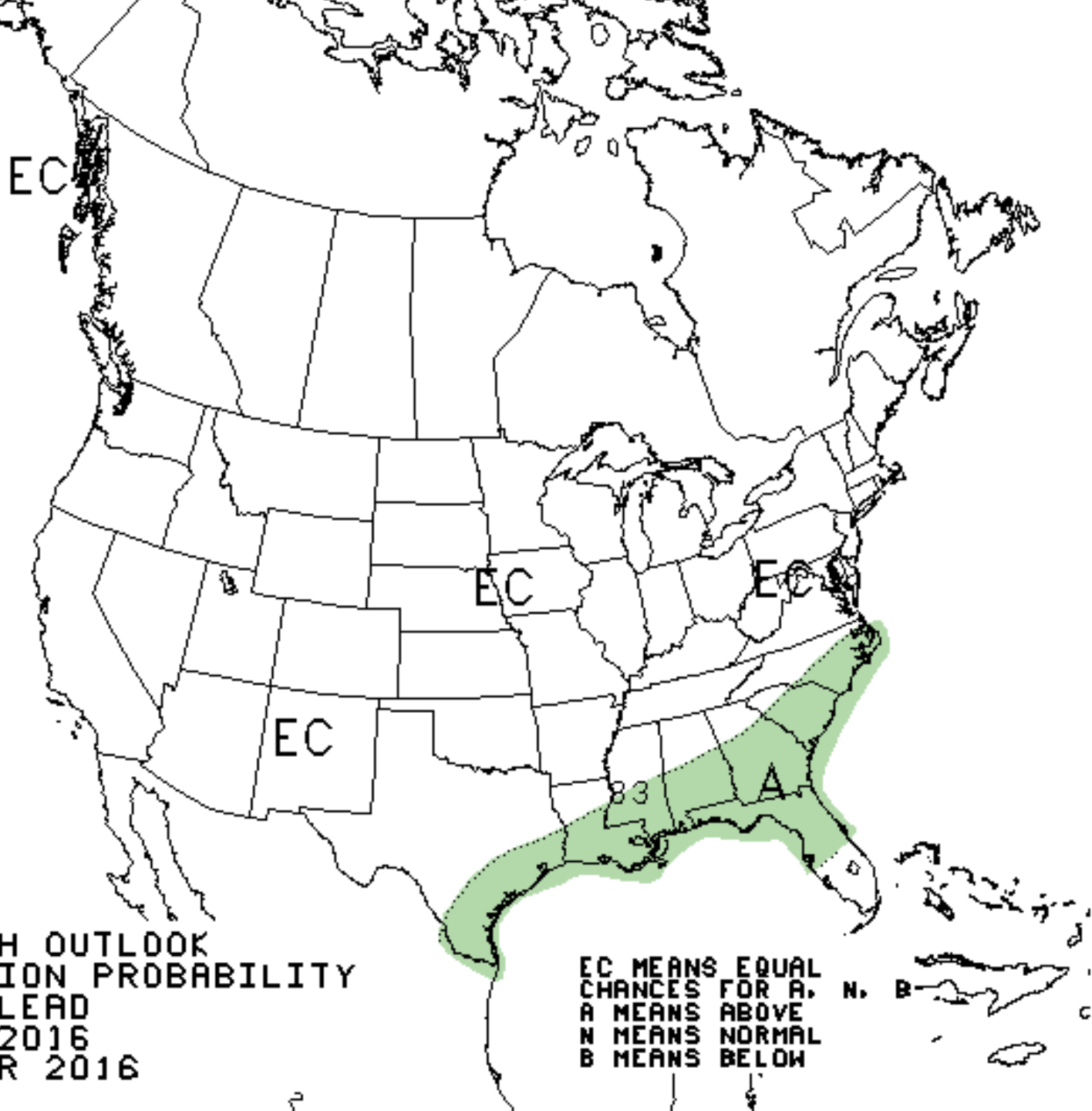
A transition to ENSO-neutral is likely during late Northern Hemisphere spring or early summer 2016, with an increasing chance of La Niña during the second half of the year.

The chance of El Niño gradually decreases during the spring and ENSO-neutral is favored during May-June-July (MJJ) 2016. The chance of La Niña and ENSO-neutral are about equal by June-July-August (JJA) 2016, with La Niña favored afterwards.





THREE-MONTH OUTLOOK  
PRECIPITATION PROBABILITY  
2.5 MONTH LEAD  
VALID JAS 2016  
MADE 21 APR 2016



EC MEANS EQUAL  
CHANCES FOR A, N, B  
A MEANS ABOVE  
N MEANS NORMAL  
B MEANS BELOW